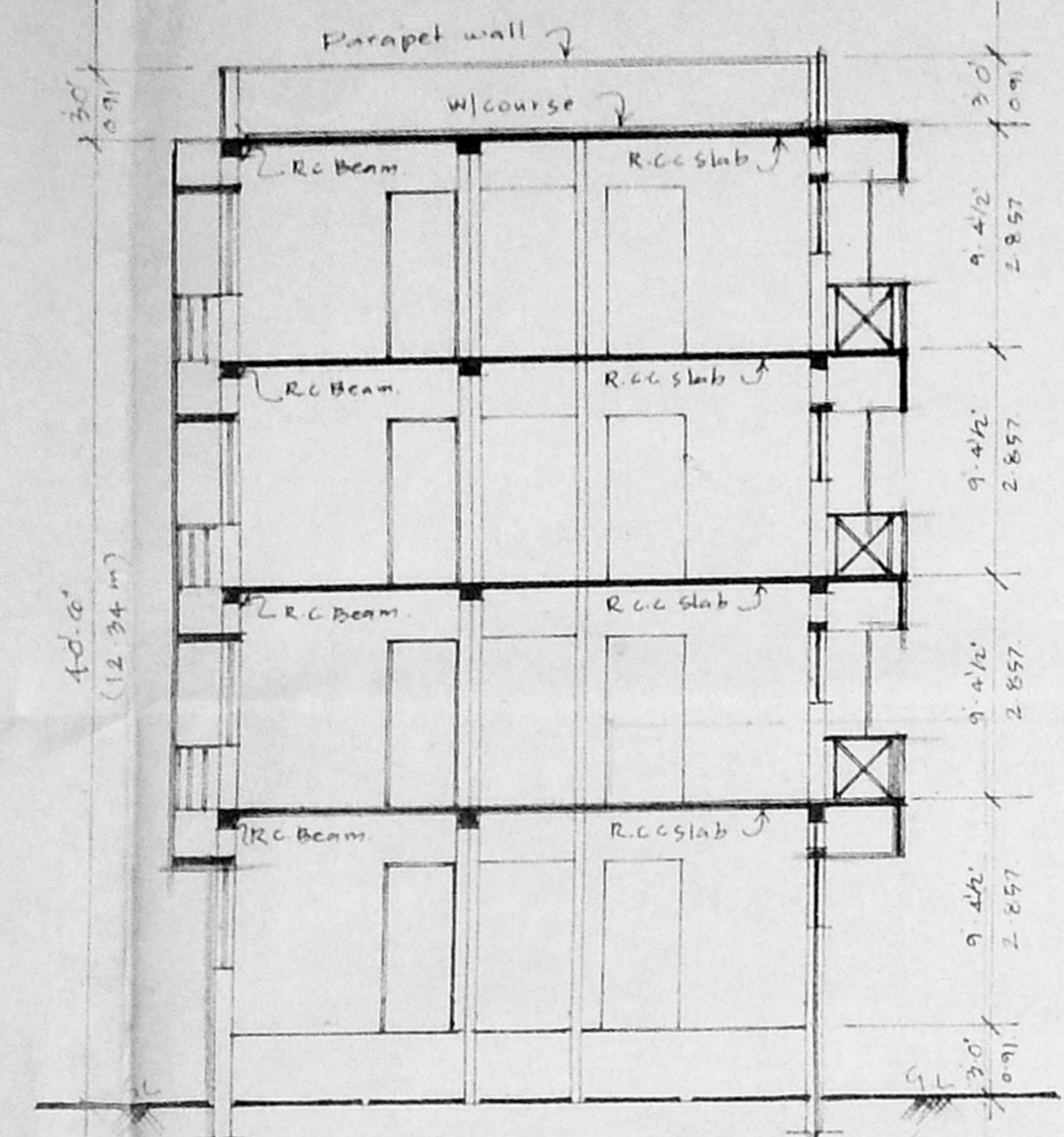
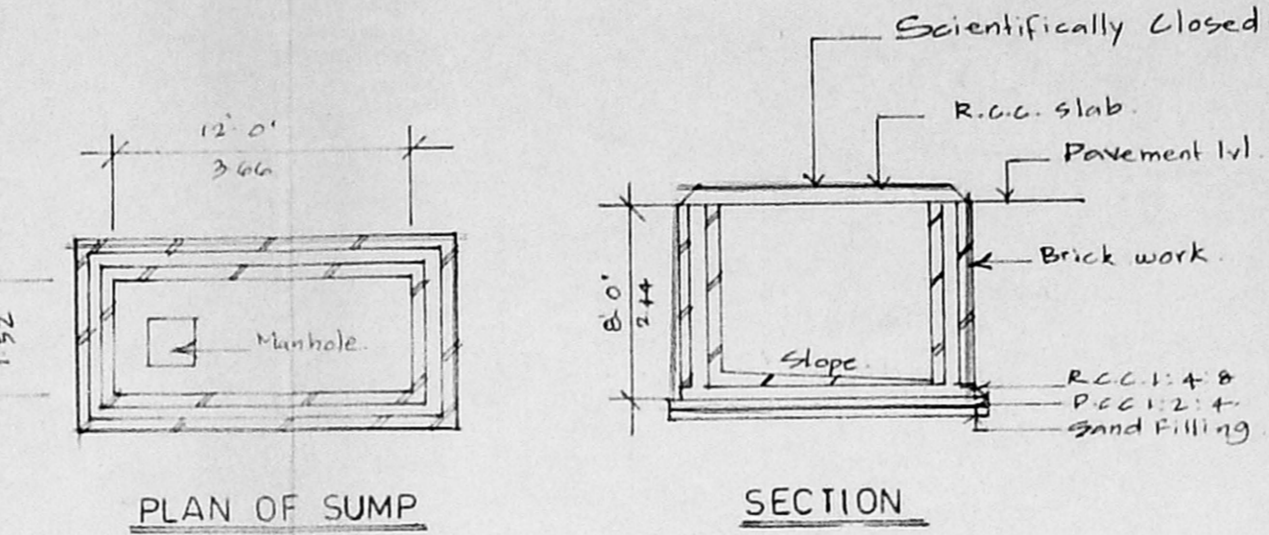


ELEVATION



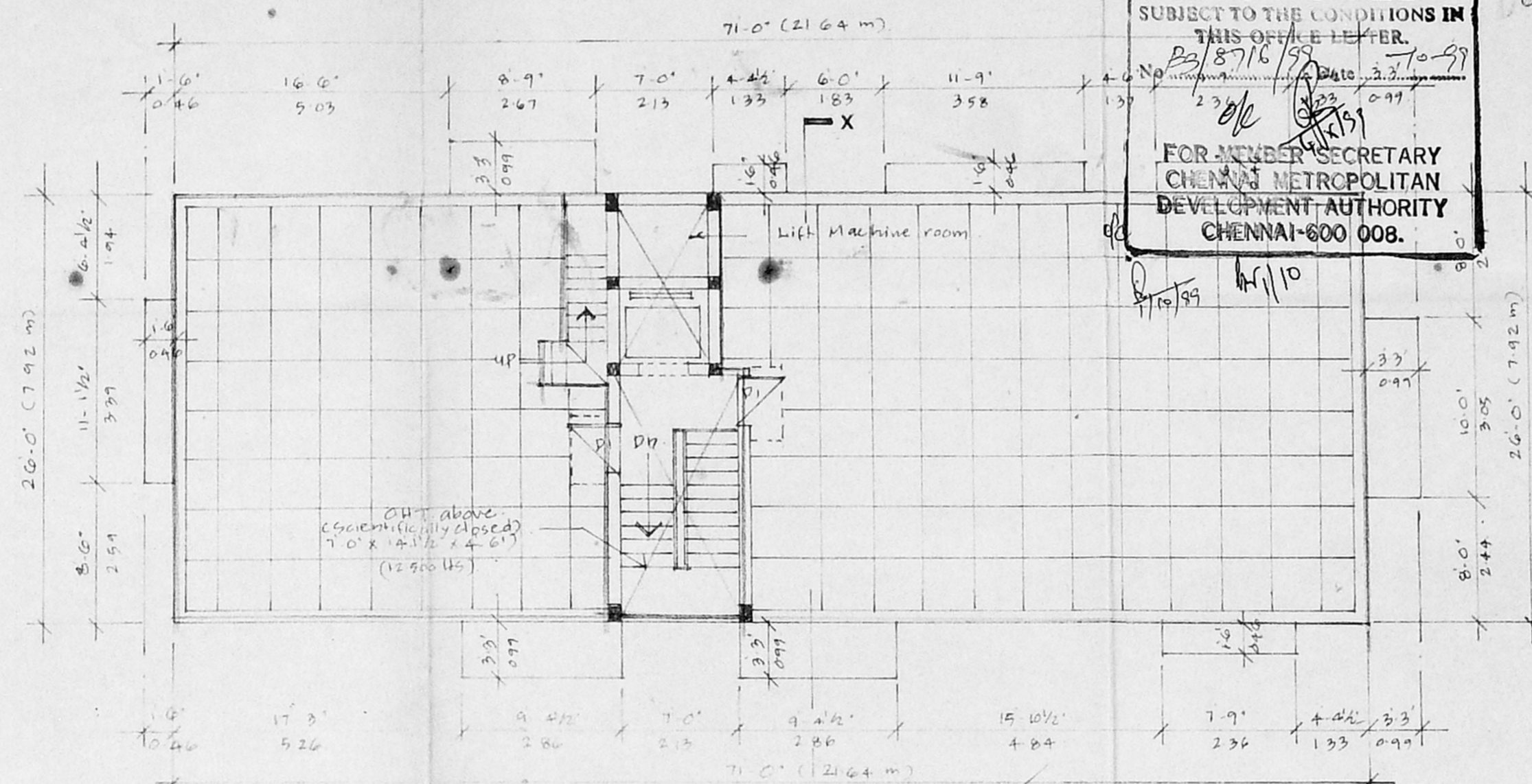
SECTION X X



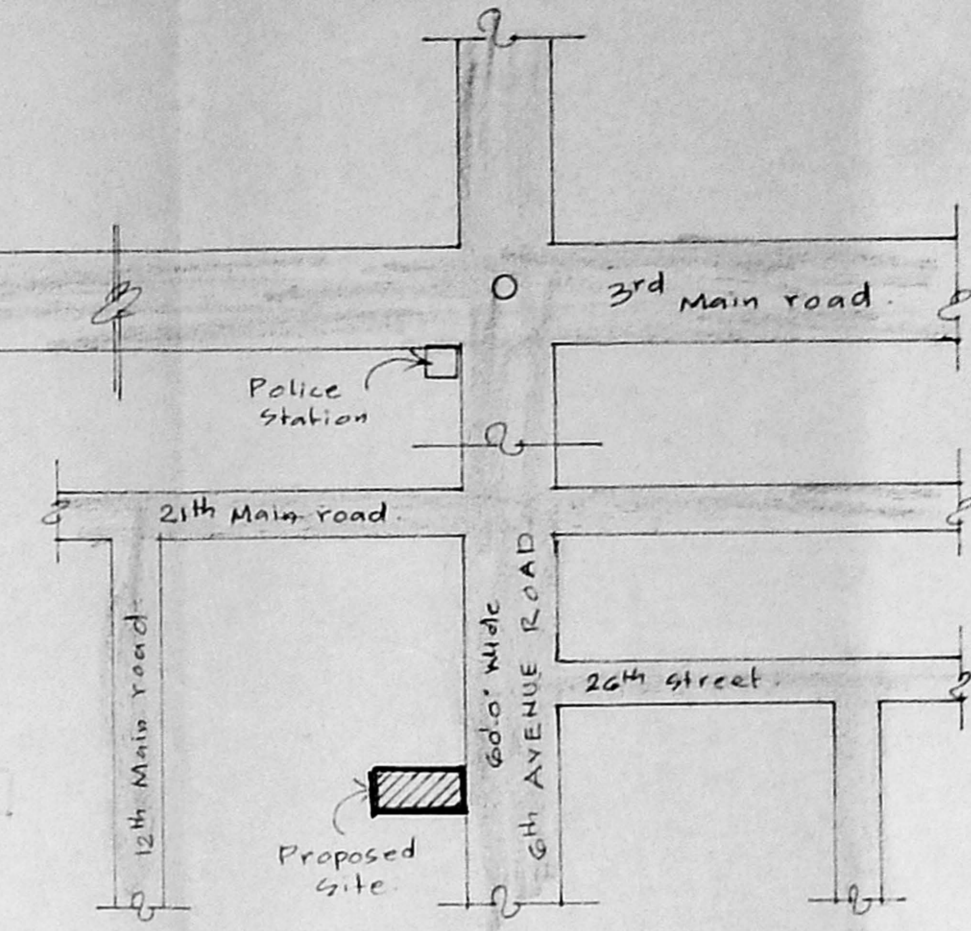
PLAN OF SUMP

SECTION

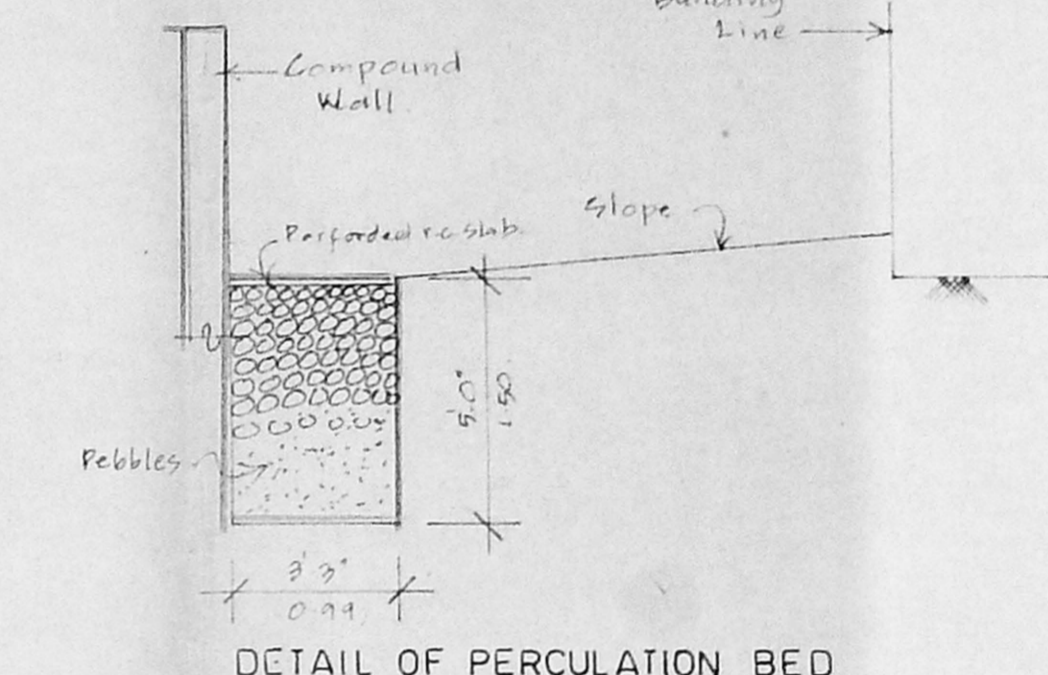
B/290/18/262/99
 Planning Permit No. B/5716/99
APPROVED
 SUBJECT TO THE CONDITIONS IN THIS OFFICE LETTER.
 No. 100/100/100/100 Date: 23.03.99
 FOR MEMBER SECRETARY
 CHENNAI METROPOLITAN
 DEVELOPMENT AUTHORITY
 CHENNAI-600 008.



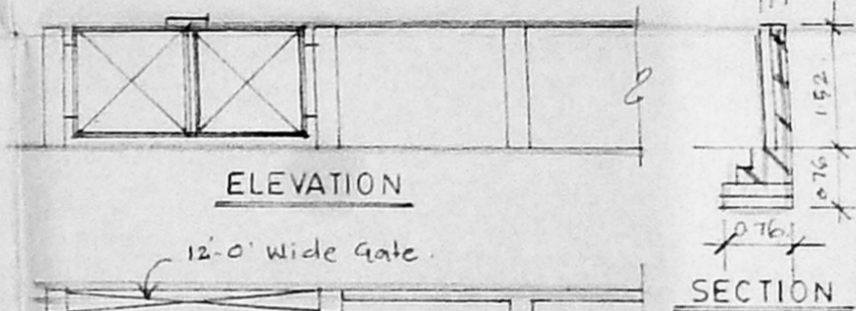
TERRACE FLOOR PLAN



KEY PLAN



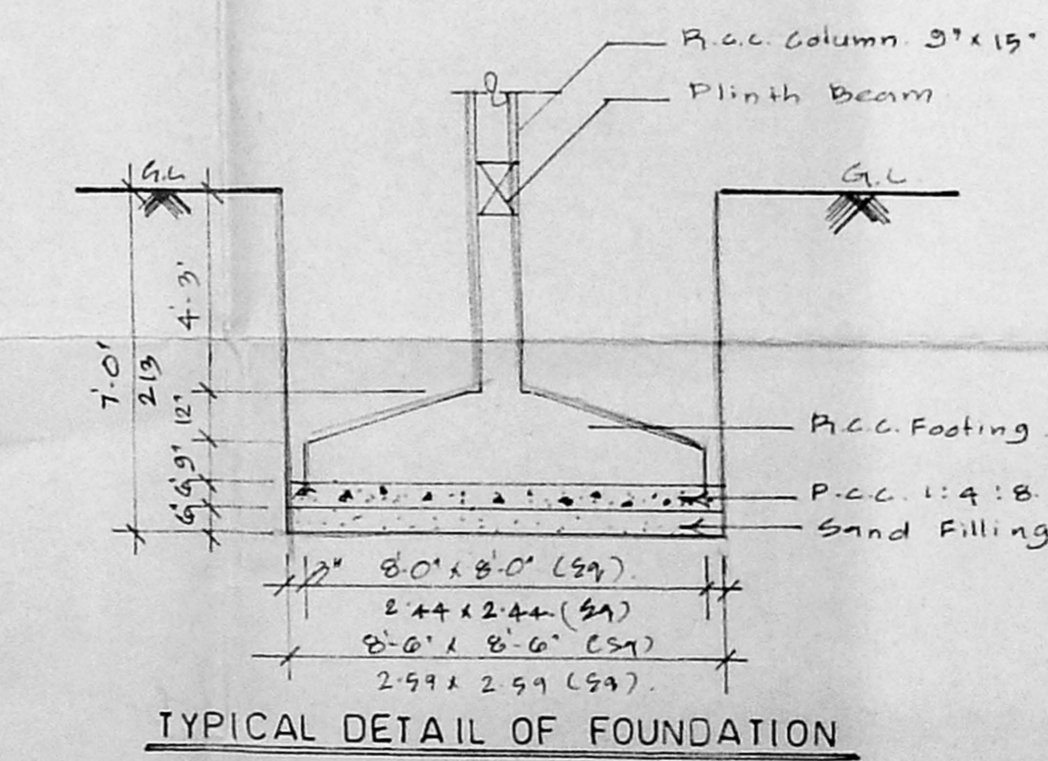
DETAIL OF PERCOLATION BED



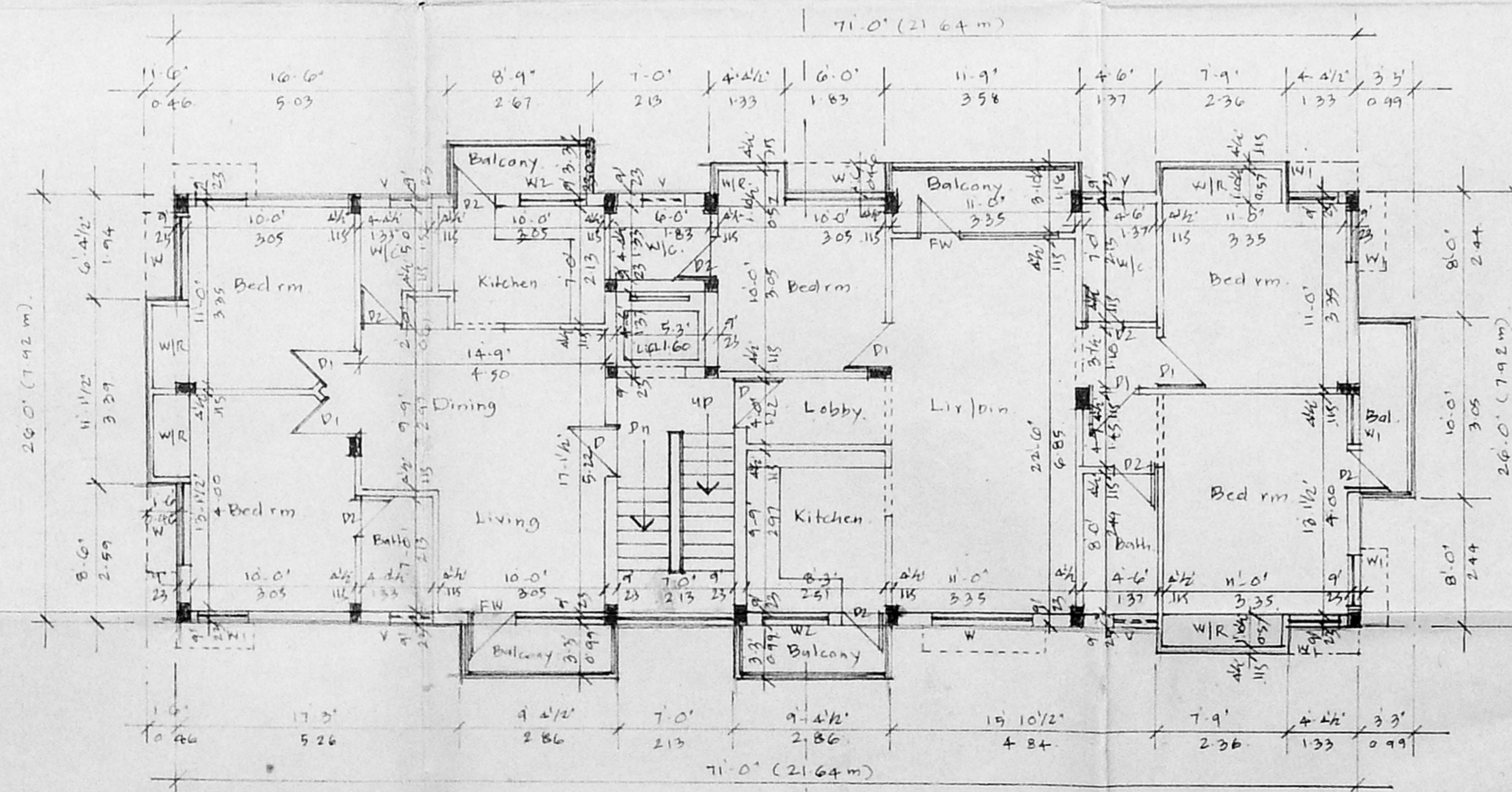
ELEVATION

SECTION

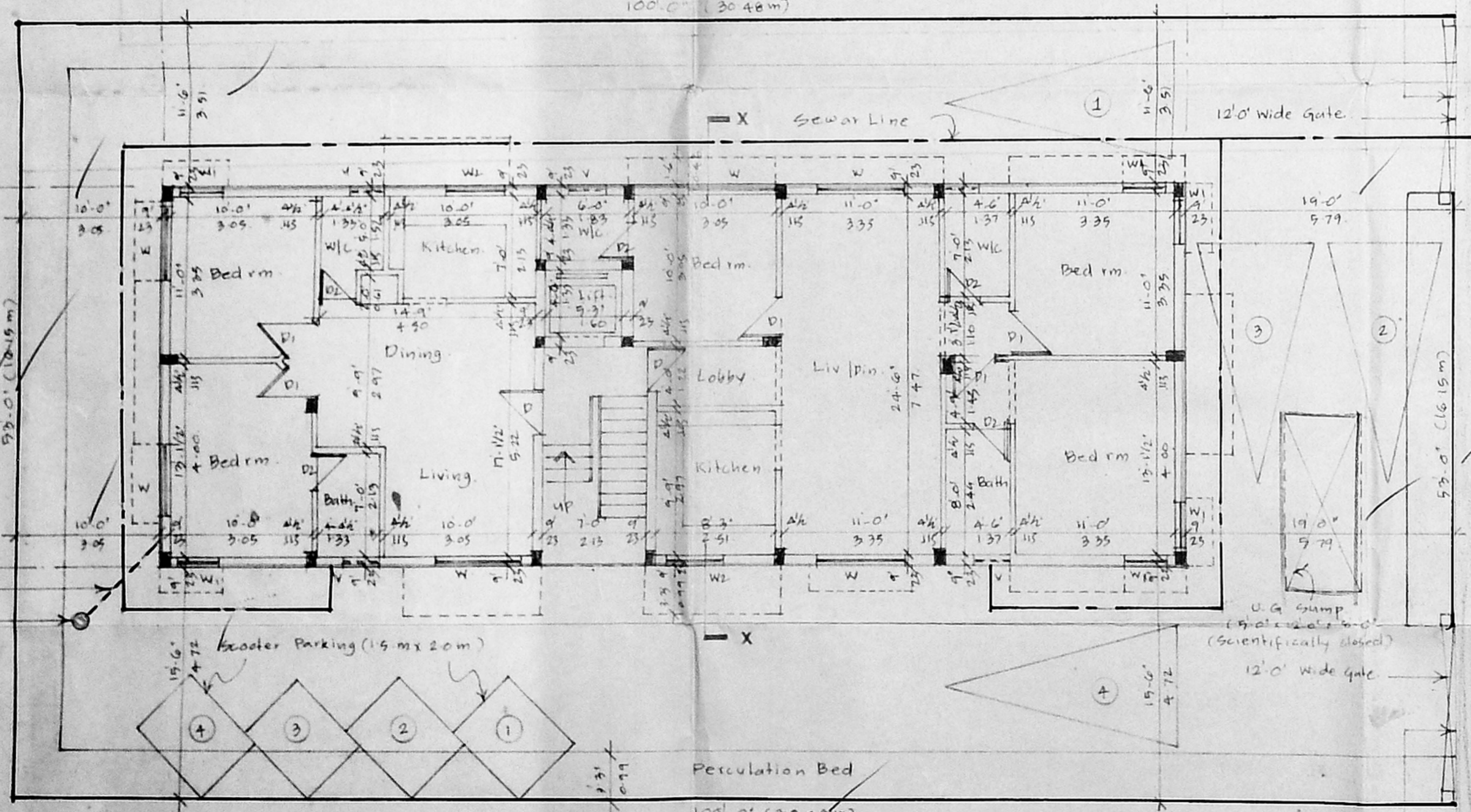
PLAN OF COMPOUND WALL



TYPICAL DETAIL OF FOUNDATION



FIRST SECOND & THIRD FLOOR PLAN



SITE CUM GROUND FLOOR PLAN

Schedule of Joinery:

No	Width	Height	Description
D	3'-3"	7'-0"	C.W. Door
D1	3'-0"	7'-0"	C.W. Door
D2	3'-0"	7'-0"	C.W. Door
W	3'-0"	4'-0"	Revised C.W. glazed window
W1	3'-0"	4'-0"	C.W. glazed window
W2	3'-0"	4'-0"	C.W. glazed window
W3	3'-0"	4'-0"	C.W. glazed window
W4	3'-0"	4'-0"	C.W. glazed window
W5	3'-0"	4'-0"	C.W. glazed window
W6	3'-0"	4'-0"	C.W. glazed window
W7	3'-0"	4'-0"	C.W. glazed window
W8	3'-0"	4'-0"	C.W. glazed window
W9	3'-0"	4'-0"	C.W. glazed window
W10	3'-0"	4'-0"	C.W. glazed window
W11	3'-0"	4'-0"	C.W. glazed window
W12	3'-0"	4'-0"	C.W. glazed window
W13	3'-0"	4'-0"	C.W. glazed window
W14	3'-0"	4'-0"	C.W. glazed window
W15	3'-0"	4'-0"	C.W. glazed window
W16	3'-0"	4'-0"	C.W. glazed window
W17	3'-0"	4'-0"	C.W. glazed window
W18	3'-0"	4'-0"	C.W. glazed window
W19	3'-0"	4'-0"	C.W. glazed window
W20	3'-0"	4'-0"	C.W. glazed window
W21	3'-0"	4'-0"	C.W. glazed window
W22	3'-0"	4'-0"	C.W. glazed window
W23	3'-0"	4'-0"	C.W. glazed window
W24	3'-0"	4'-0"	C.W. glazed window
W25	3'-0"	4'-0"	C.W. glazed window
W26	3'-0"	4'-0"	C.W. glazed window
W27	3'-0"	4'-0"	C.W. glazed window
W28	3'-0"	4'-0"	C.W. glazed window
W29	3'-0"	4'-0"	C.W. glazed window
W30	3'-0"	4'-0"	C.W. glazed window

CMDA/18/100/100/100
 C. No. B/5716/99
 Asst. Secretary

Specification:

- P.C.C. 1:4:8
- R.C.C. 1:2:4
- 230mm brick work in cement mortar
- 115 AF brick work in cement mortar
- Plastering the ceiling in cement
- Plastering the walls in cement
- Weathering course in brick jelly lime concrete with a course of flat tiles
- The O.H.T. is scientifically closed
- The U.G. sump is scientifically closed
- All windows in ground floor raised by 0.4m from ground level.

Area Statement: 59 ft. 59 m

PLOT AREA : 5300.00 : 492.57

Proposed Construction:

Ground Floor Area : 1846.00 : 171.56

First Floor Area : 2032.02 : 188.85

Second Floor Area : 2032.02 : 188.85

Third Floor Area : 2032.02 : 188.85

Total Builtup Area : 7942.06 : 738.11

F.S.I Applied For : 1.493

Plot Coverage : 33%

Legend:

Proposed Construction : [Symbol]

Boundary Line : [Symbol]

Roads : [Symbol]

Sewer Line : [Symbol]

Water Line : [Symbol]

Owner:

[Signature]

Job Title:

Proposed Apartments at Plot No. 939
 6th Avenue Road, Anna Nagar,
 Chennai. 40. Bearing Survey No. 127/Part
 (Iyashwarya Kudiyiruppa) Corporation

Div No: 33, New No: 64
 T.S No: 77, Block No: 45
 Villivakkam Village For
 Mr. C. KASTURI RAJ (POWER AGENT)

Scale: 1" = 8'-0" Date: 26.04.99

Licensed Surveyor:

V. Srinivasan

V. SRINIVASAN, A.I.A.,
 Registered Architect - CA/96/19755
 Licensed Surveyor - Corporation of Chennai
 RA No. 344
 6, South Road, West C.I.T. Nagar
 Chennai - 600 035. Phone: 433 82 62